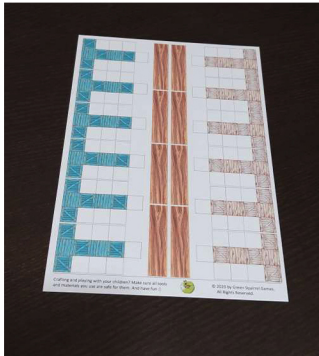


# Make your Green Squirrel Free Print & Play game even better

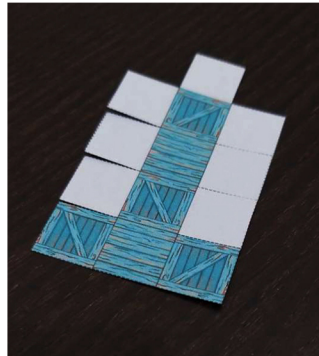
## Make the Boxes

To make the boxes for Warehouse wars, you will need the printed out sheets from the Game Pieces section on the website, a pair of scissors and some dry glue. Any glue will work really, but excess moisture can cause thin paper to wrinkle, so a dry type of glue is best.

Follow the instructions below to make the boxes:



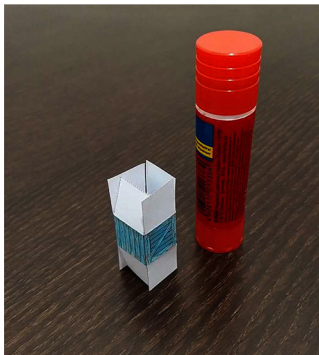
1. Print the 4 pages from the Game Pieces file.



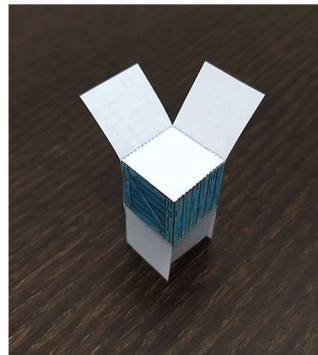
2. Cut out the box shape and carefully cut along all dotted lines.



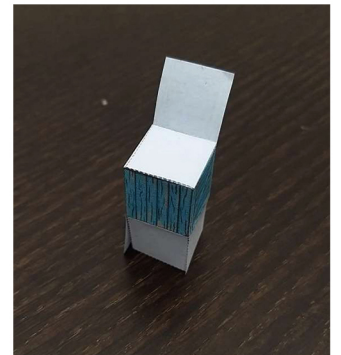
3. Fold along all uninterrupted lines.



4. Fold the box along the length of the design and glue the white tab underneath the design tab to form the main body of the box



5. Ad glue to the inside of one of the white tabs and glue it on the next white tab.



6. Glue the third white tab onto the first two.



7. Glue the coloured tab on top of the white tabs.

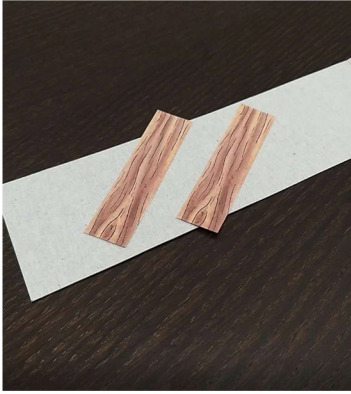


8. Repeat the process with the other side and the box is ready for play. Now you only have 35 left to do :)

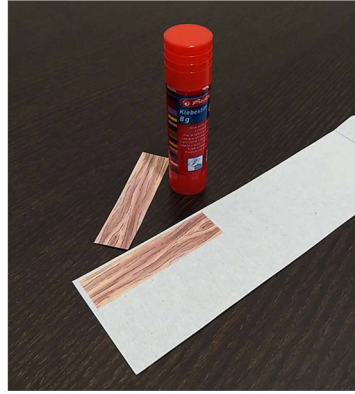


# Make the Planks

The other pieces in the game require a bit more dry glue and any form of medium thickness card. For our prototypes we always use a cereal box as we are big fans of recycling and reusing everyday objects for our games, but any card you have on hand will do. Once you have the materials, making the board and planks is easy as pie:



1. cut out the plank designs. Each plank will need two designs as they need to be double sided.



2. glue one design onto the card.



3. Cut out the design with the card and glue the other design on the reverse side.



Your plank is ready to support all your precious cargo :)

If you like, repeat this process with the game board. This is not compulsory, but it will add stability to the game and make it even better.

## Tips:

1. Make sure all the pieces are placed on the same thickness of card. For example, if you are using cereal boxes, choose boxes of the same make and kind.
2. If you can, use a dry type of glue or spray mount and spread the adhesive evenly. Immediately after putting the pieces together, smooth the paper carefully. This will help the paper stay smooth and give a nice finish to the tiles.
3. Pay special attention to the edges and corners of the tiles, making sure they are glued well. This will help with the durability of the tiles.

PS: We made our prototype from 2 large cereal boxes and the four sheets of printed plain paper. That is what we have used in all the photos for the game.



# Box

We have designed an awesome box for Warehouse Wars to hold all the tiny pieces in one neat place. You will find the print file in the Box section for Warehouse Wars on our website. Print the file in colour for full effect or in black and white if you prefer. If you can use thicker print paper, that would give a better result, but plain paper will do just fine. Follow the instructions below to make your box.



Start by printing the file and cutting out the overall shape of the box. This box uses the full width of the A4 sheet you print. Make sure the printer is set to print at 100% size, rather than 'shrink to fit'. This way the box will be the appropriate size for the pieces.

Your printer probably won't print to the edges, but that's not a problem at all. Simply extend the lines from the design to the edges, using a pencil or just cut and fold by eye.

Cut out the overall shape by cutting along the dotted line on the bottom of the design.

Next cut along the four short dotted lines in the four corners of the design and fold along all the uninterrupted lines.



This next step is not compulsory. You can skip it if you like, but we are suggesting it because it will add some extra support and durability to your box. What we are doing is to insert four pieces of card into the sides of the box to make it sturdier. As this box is larger than the others in our collection, it has fewer layers of the paper itself and the card helps balance that. So, if you would like to do this step, here is what you need to do:

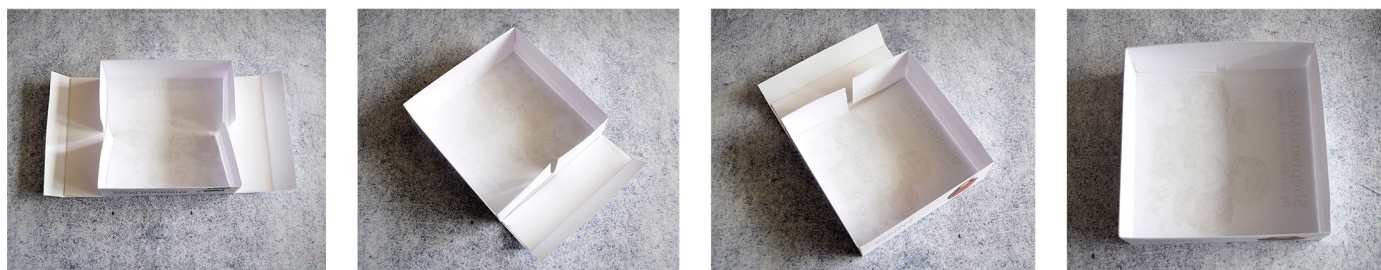


Use any card that is not too thick. Thin to medium card will do best, but even thick paper will work. It is best to use white card or paper as this will not affect the colour of the box.

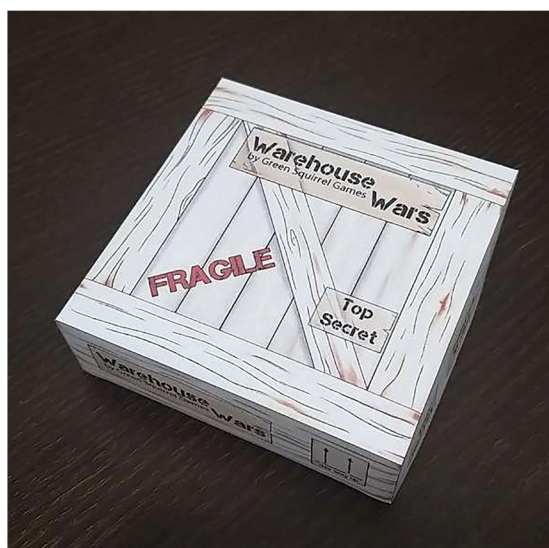
Cut four strips of the card that are roughly 30x203mm. To make sure you have the right size, simply measure the inside of the side of the box. The strip of card needs to be a little smaller than the side itself, so it fits comfortably and doesn't alter the shape of the box.

Use spray mount or another type of dry glue to glue the pieces of card to the sides of the box itself. Make sure they fit comfortably within the folds of the design. Finally, fold over and glue the two long sides as shown on picture 3 above.

If you chose not to do this step, simply skip the card and just fold over and glue the paper on the two long sides.



Next, fold the little 'wings' on both long sides of the box and then fold the sides in as shown on the first picture above. Then, add some spray mount or glue to the remaining sides, fold them over the little 'wings' and press to glue well. That's it! One half of your box is ready :)



Repeat all the steps above with the other half of the box design and voilà! You have an adorable little box that fits all the awesome pieces from Warehouse Wars.

We hope you enjoy both crafting and playing Warehouse Wars :)

